

# COMPOSITE MANHOLE COVER SQUARE

**kompotech**

## KMH-402 SERIES

### SQUARE MANHOLE COVER 760 x 760 mm

#### Application Area

Petroleum stations and general purpose

#### Performance

Class D400, C250, B125 according to EN 124

#### Technical Properties

- Produced from fiberglass reinforced polyester
- According to EN 124
- B125 ,C250, D400 classes are available
- Resistant -40 °C +80 °C
- 36 kg unit weight

#### Packaging

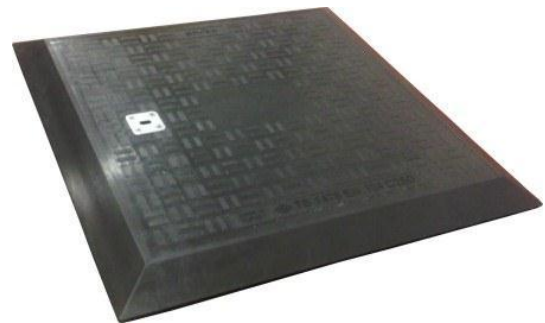
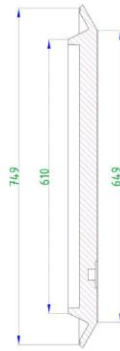
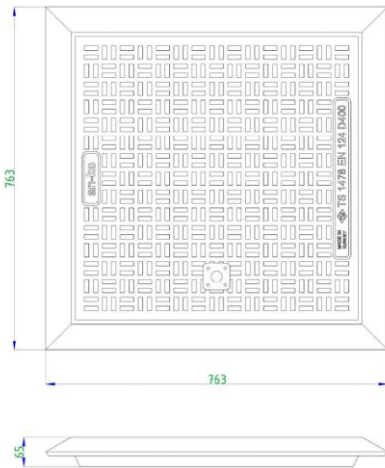
12 pieces on 800x900x1600 mm pallet

#### Colors

Grey RAL 7035 , Dark Grey RAL 7011 , Black RAL 9005 , Grass Green RAL 6010 , Green RAL 6000, Orange RAL 2004, Blue RAL 5002 , Red RAL 3020, Brown RAL 8024 , Yellow RAL 1021 and RAL 1007

#### Benefits

- No risk to be stolen
- Does not rust
- Lighter than metal versions , gives advantage in assembly
- Noise level is minimum compared with metal versions
- Dimensional stability
- May be manufactured in different colors
- Logo application is available for personalization



# COMPOSITE MANHOLE COVER SQUARE

**kompotech**

## Assembly

